

Play worker



Are you looking for fun, flexible work that fits around your life? Want to work for an inspiring charity making a real difference to the lives of disabled children and young people?

As a Play Worker, you will be working directly with disabled children, or young people and their families, to support them with their needs. This is an opportunity to develop your skills in a rewarding role, and gain a strong sense of achievement.

Read further to find out about whether this role is right for you.

For more information about KIDS please visit www.kids.org.uk.

Our vision is a world in which all disabled children and young people realise their aspirations.

What We Do



KIDS are a national charity, founded over 48 years ago, providing a wide range of support services to disabled children, young people and their families. We support children with any disability from birth to 25 years of age. We also offer our support to the whole family with the aim of giving disabled children a brighter future.

“Your involvement with my family has meant huge practical help during a difficult time. I think the key thing is that KIDS does stuff with and for the whole family, not just the child. I am sure that yours is the kind of service that helps prevent family break up as a result of the strains that a child with a disability brings.”

We cannot change a diagnosis and we cannot cure but we can, and we do, make a very real difference to the lives of families with a disabled child through high quality, practical and tailored services delivered by dedicated professional staff. KIDS provides over 120 different services and works with 80 local authorities throughout England. **In 2017-2018 we supported over 15,000 disabled children, young people and their families.**

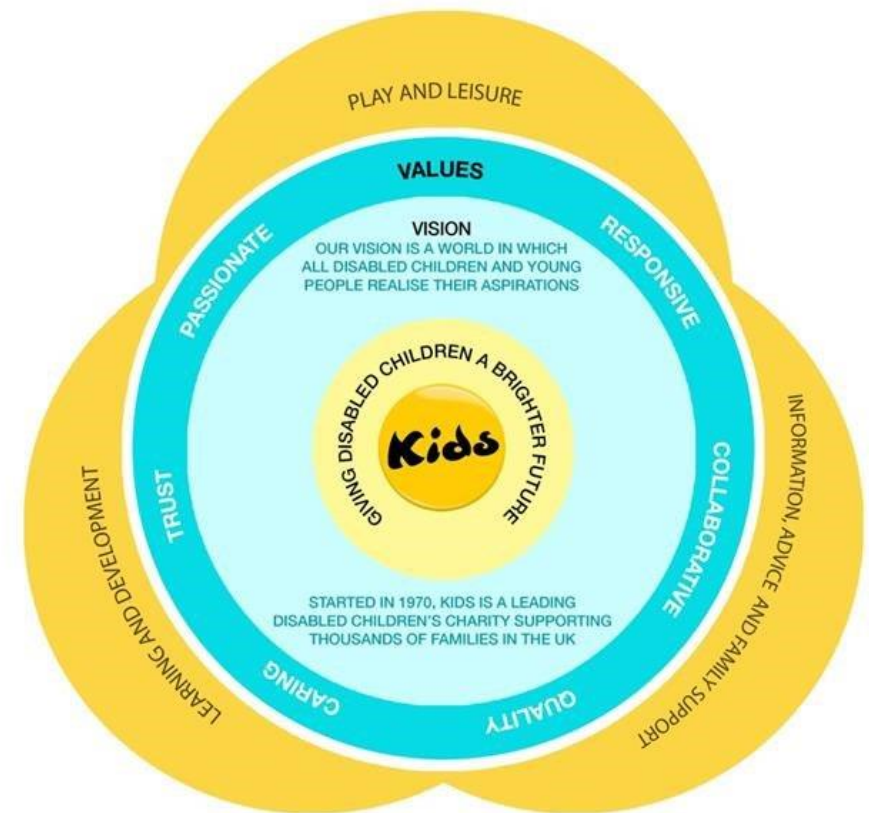
Our values

We are passionate
We are collaborative
We believe in quality
We are responsive
We are caring
We are trusted

We are passionate about making a life-changing, positive difference to the lives of disabled children, young people and their families. Everything we do places the child at the centre of our support, our services then focus on providing care, which wraps around the child within their family.

To learn more about our corporate strategy, please visit
<https://www.kids.org.uk/Pages/FAQs/Category/trustees>.

Our values underpin the work that we do with children, young people, and families in three main areas of their lives — we call these our “circles of support”.



What You Can Expect



Our services

KIDS was established in 1970 by John Mulcahy, a teacher who had become concerned about the development of a disabled child in one of his classes. Looking to improve communication with the child.

John turned to the child's mother for guidance. This sowed the seeds of working in partnership with parents and carers to enable disabled children and young people to develop their skills and abilities and to fulfil their potential, hopes and dreams.

KIDS are a charity which has pioneered a number of approaches and programmes for disabled children and young people. These include Home Learning (Portage), Parent Partnerships, Adventure Playgrounds and the inclusion of disabled children in mainstream educational settings.

KIDS has a rich history and vast experience of meeting the needs of disabled children and young people and families. Therefore, KIDS is well-placed to play a leading role supporting the development of policy affecting this important group in society.



Our benefits

Here at KIDS we want you to know that you are valued, and that we are committed to your safety and wellbeing. Our benefits include:

- Access to KIDS Virtual College: our wide range of interactive e-learning training courses which carry CPD points
- Strong sense of achievement from meaningful work
- Generous holiday pay
- Work-life balance and flexibility in working

'Being given the opportunity to make a positive impact on a young person's life' - Ollie, Assistant Practitioner

Safeguarding



KIDS Safeguarding Board acts in an advisory capacity to monitor and continuously improve safeguarding practices throughout the organisation. To read our safeguarding policies, please click on the links below:

[Safeguarding Children and Young People Policy](#)

[Safeguarding Vulnerable Adults Policy](#)

[Disclosure and Barring Service Policy](#)

KIDS are committed to safeguarding and promoting the welfare of children and young people and expects all staff and volunteers to share this commitment. All children and young people we work with must, at all times, feel safe.

As part of our commitment to safeguarding KIDS has a safeguarding board with representatives from all parts of the organisation. The board meets regularly to review policy and practice as well as to disseminate learning and good practice. KIDS have a designated safeguarding lead at director and at trustee level.

KIDS follow safer recruitment principles and all staff and volunteers working with children, young people or their families have DBS checks, regular supervision and also safeguarding training.

We work closely with families and co-operate fully with other agencies to take all reasonable steps to minimise the risks of harm to a child or young person's wellbeing. We recognise that whilst not all risks can be eliminated, we must operate in an atmosphere of safe uncertainty. This means that children and young people must feel secure and safe in the face of reasonable risks, but should never be knowingly or unknowingly put in a position of significant harm or abuse.

Job Description



Overall Purpose of Role

To work as part of a team to provide fun play and leisure opportunities which capture the interests of disabled children and young people (5 – 18) at various venues across the county.

To ensure children and young people have access to safe and stimulating centre based opportunities that reflect their preferences and interests including occasional access to community activities.

-



Key Relationships

You will be building relationships both internally and externally at KIDS. You will be working as part of the play and leisure team to support children/young people accessing the service under the direction of the play and leisure team leader. You will be required to establish and maintain positive relationships with children/young people and their families in a way that values everyone

Working Context

You will be required to work variable hours which may include evenings, weekends, and bank holidays.

You may be required to travel between locations, and so the ability to travel independently to the identified activity/venue is essential.



Key Responsibilities

- To work as part of a team under the direction of the team leader to provide a positive and fun environment that children and young people want to attend.
- To support and supervise children and young people to access a varied programme of safe, stimulating activities that are age and ability appropriate. This could be on a 1:1 basis or as part of a small group
- To support and empower children/young people to engage in activities of their choice.
- To ensure the social, emotional, communication and physical needs of each child/young person is met in a manner that is sensitive to the religious, cultural, linguistic and ethnic origins of the individual.
- To use a range of skills to communicate effectively with all children/young people, respectful of individual communication skills.
- To provide physical and personal care in a sensitive manner as required.
- To liaise fully with the Team Leader and staff team in relation to any changes or concerns with individual children/young people.
- To input into session reports for individuals accessing the service.
- To follow the guidance for all individuals and venue risk assessments.
- To keep abreast of any changes in children and young people's care plans.





Key Responsibilities

‘The staff are really friendly and create a nice atmosphere to work in’ - Sarah, Assistant Practitioner

Safeguarding Policies and Procedures

1. To be familiar with and fully comply with all KIDS policies and procedures including child protection, safeguarding, health and safety, confidentiality and partnership.
2. To work within the standards required by relevant regulatory bodies.
3. To ensure that the safeguarding and risk for each child or young person is reviewed regularly.
4. To safeguard the health, wellbeing and safety of the children and young people, and if any concerns arise, to immediately report any concerns in line with KIDS policies and procedures.

Other Responsibilities

You are responsible for maintaining the confidentiality of materials from all systems both electronic and paper and you may not remove from the premises any hardware, software, files, photographs or data without written permission unless agreed by your Line Manager/ equivalent as part of the execution of your normal duties.

Sharing the responsibility for ensuring that the organisation stays in touch and synchronised across the country.

KIDS is committed to safeguarding and promoting the welfare of children and young people and also expects for all staff and volunteers to share this commitment. All children and young people we work with must, at all times, feel safe.



Person Specification

Proven Ability

To be able to carry out this role it is essential that you have the following characteristics:

- A commitment to working in partnership with parents/carers.
- Ability and commitment to work effectively as part of a team.
- The ability to listen, reflect and communicate appropriately and effectively with service users and colleagues.
- Ability to be pro-active and use own initiative.
- Understanding and competence in safeguarding procedures.
- Understanding of the importance of confidentiality and professional boundaries.
- Ability to keep accurate records.
- Fun and open minded attitude to delivering play and leisure services.
- Ability to work under pressure.
- Understanding of and commitment to equality of opportunity and diversity in practice and ability to apply this to practice.
- To work in a non-judgemental, patient and sensitive manner.

Education/Qualifications

- Educated to GCSE level or NVQ level 2 as a minimum.
- Whilst not essential, it is desirable if you have formal qualifications in a child care related subject, current first aid certificate, and current food hygiene certificate.
- You may require a driving licence.





Person Specification

Desirable criteria

To be able to carry out this role it is desirable that you have the following characteristics:

- Understanding of child protection issues.
- Understanding of health and safety.
- Experience of working with children/young people with disabilities/additional needs, and their families.
- Understanding and knowledge of meeting the complex needs of disabled children/young people.
- Understanding and competence in safeguarding procedures.
- Understanding of the importance of confidentiality and professional boundaries
- Own transport.
- Interest in an active healthy lifestyle e.g. sports, gardening, cooking.
- Knowledge of the local area.

Desirable Education/Qualifications

- Formal qualification in a child care related subject.
- Current first aid certificate.

Thank you for choosing KIDS. We look forward to receiving your application.